

Digital Undercounter ecostore HP Concept Refrigerated Counter, 3 Door without top Remote

ITEM # _____

MODEL # _____

NAME # _____

SIS # _____

AIA # _____



710329 (EK3R7AAA)

3-door Refrigerated
Counter, -2+10°C, AISI 304,
without work top, remote

Short Form Specification

Item No. _____

AISI 304 stainless steel panels, AISI 430 bottom panel, galvanized back panel. N. 3 full doors. For connection to a remote refrigeration unit (not included). Operating temperature: -2+10°C. R134a gas in refrigeration circuit. Supplied with 1 grid for each door compartment

Main Features

- Equipped with forced air circulation system for rapid cooling and temperature distribution within the cell.
- 0mm clearance installation space: tower configuration cooling unit guarantee performance with frontal ventilation only; this unique solution allows installation against the wall or side by side with other appliances, even on the cooling unit side to maximize the use of kitchen space.
- Combination of doors and drawers to suit any configuration needed, with the possibility to change the configuration on site. Right cooling unit available on request.
- Fully compliant HACCP digital control: when temperature exceeds critical limits, acoustic and visual alarms are activated. Up to two months of event are kept in memory.
- Anti-tilt runners accept GN 1/1 containers.
- Self closing stainless steel doors (< 90°).
- Certified safety CE requirements.
- Prearranged to fit RS485 port to facilitate connection to a remote computer and integrated HACCP systems.
- Adjustable temperature range from -2 °C to +10 °C to suit meat, fish and dairy storage requirements.
- Refrigerated compartment designed to accept GN 1/1 containers.
- Combination of doors and drawers to suit varying needs, with the possibility to change the configuration on site.
- Digital control panel.
- Forced air circulation for rapid cooling and an even temperature distribution.
- Connectivity ready for real time access to connected appliances from remote and data monitoring (requires optional accessory).
- Digital white-digit display with internal temperature display and setting, manual activation of defrost cycle and turbo frost cycle (to rapidly cool warm loads).
- Easy serviceability thanks to the intuitive control panel with access via app.
- Integrated RS485 port to facilitate connection to a remote computer and integrated HACCP systems.
- Tropicalized unit.

Construction

- Fault code display.
- Interior base with rounded corners, pressed from a single sheet.
- Pre-arranged for drain-pipe.
- 3 compartments with 3 doors.
- Mounted on stainless steel feet to give 150 mm (-5/+50 mm) clearance for ease of cleaning the floor.
- External bottom panel in stainless steel.
- External back panel in galvanized steel.
- Ease of cleaning and high hygiene standards thanks to the rounded internal corners, the easily removable runners, grids and air conveyors.
- Internal structure with 15 charging positions (3 cm

APPROVAL: _____

pitch) available to host GN 1/1 grids, ensuring higher net capacity and a greater storage space.

- Excellent space optimisation thanks to the compact dimensions.
- Remote refrigeration unit.
- Constructed from AISI 304 Stainless steel throughout to meet the highest hygiene standards.
- Rounded internal corners for ease of cleaning.
- Mounted on Stainless steel adjustable legs to give 150 mm clearance for ease of cleaning.
- Developed and produced in ISO 9001 and ISO 14001 certified factory.
- Extractable cooling unit to facilitate maintenance.

Sustainability



- CFC and HCFC free (ecological refrigerant type: R134a, - gas in foam: cyclopentane).
- Fitted with 90 mm thickness of cyclopentane insulation for best insulating performance (thermal conductivity: 0,020 W/m*K) and lowest environmental impact (GWP=3).
- Removable triple-chamber balloon magnetic gasket to improve insulation and reduce energy consumption and ease of cleaning.

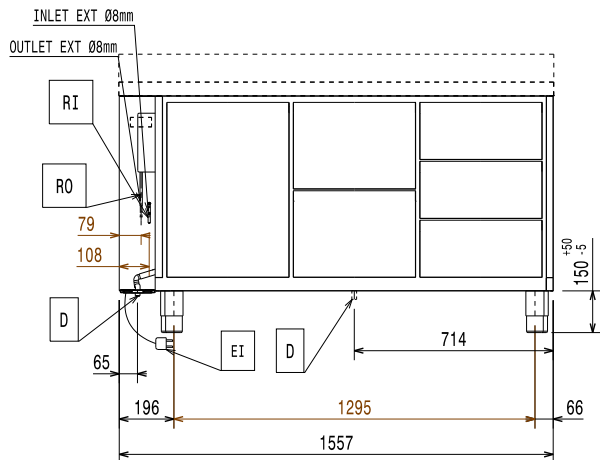
Included Accessories

- 3 of Kit 1/1 grey rilsan grid and 2 side runners for refrigerated counters PNC 881109

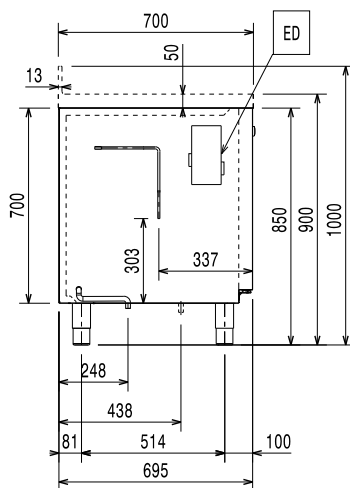
Optional Accessories

- | | | |
|--|------------|--------------------------|
| • Automatic defrost with waste evaporation | PNC 880028 | <input type="checkbox"/> |
| • Remote unit for refrigerators and refrigerated counters, -2+10°C, R134a | PNC 880231 | <input type="checkbox"/> |
| • 2x½ drawer kit for refrigerated counters | PNC 881058 | <input type="checkbox"/> |
| • 3x1/3 drawer kit for refrigerated counters | PNC 881059 | <input type="checkbox"/> |
| • 1/3 and 2/3 bottle drawer kit for refrigerated counters | PNC 881071 | <input type="checkbox"/> |
| • 1/1GN grey rilsan grid for refrigerated counters | PNC 881107 | <input type="checkbox"/> |
| • 2 side runners for 1/1 GN ecostore refrigerated counters | PNC 881108 | <input type="checkbox"/> |
| • Kit 1/1 grey rilsan grid and 2 side runners for refrigerated counters | PNC 881109 | <input type="checkbox"/> |
| • 1/1 GN plastic container, H=65 mm | PNC 881110 | <input type="checkbox"/> |
| • 1/1 GN plastic container, H=100 mm | PNC 881111 | <input type="checkbox"/> |
| • 1/1 GN plastic container, H=150 mm | PNC 881112 | <input type="checkbox"/> |
| • Lock for refrigerator/freezer counters with 3 compartments - h700mm (can be used in kit for Marine conversion) | PNC 881243 | <input type="checkbox"/> |

Front

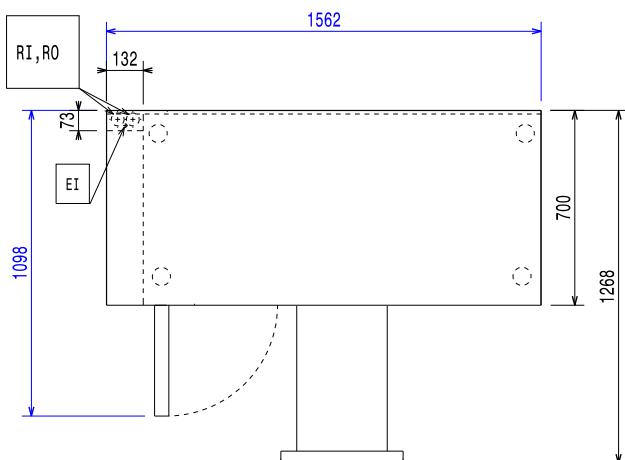


Side



EI = Electrical inlet (power)

Top



Electric

| | |
|------------------------|-------------------------|
| Supply voltage: | 220-240 V/1 ph/50/60 Hz |
| Electrical power, max: | 0.03 kW |
| Defrost Power: | 0.22 kW |
| Plug type: | CE-SCHUKO |

Key Information:

| | |
|---|---------------------|
| Door hinges: | |
| External dimensions, Width: | 1557 mm |
| External dimensions, Depth: | 700 mm |
| External dimensions, Depth with Doors Open: | 1110 mm |
| External dimensions, Height: | 850 mm |
| Internal Dimensions, Width: | 1252 mm |
| Internal Dimensions, Depth: | 560 mm |
| Internal Dimensions, Height: | 550 mm |
| Net weight: | 114 kg |
| Shipping volume: | 1.33 m ³ |
| Depth with doors open: | 1110 mm |
| Height adjustment: | -5/50 mm |
| Gross capacity: | 440 lt |

Refrigeration Data

| | |
|--|----------------------|
| Control type: | Digital |
| Min/Max internal humidity: | 40/85 |
| Operating temperature min.: | -2 °C |
| Operating temperature max.: | 10 °C |
| Refrigeration type: | R134a;R513A;R426A |
| Operating mode: | Ventilated |
| Insulation: | 90 mm (Cyclopentane) |
| Suggested refrigeration power: | 368 W |
| Condition at evaporation temperature: | -10 °C |
| Condition at condensation temperature: | 55 °C |
| Condition at ambient temperature: | 32 °C |
| Connection pipes (remote) - outlet: | 9.5 mm |
| Connection pipes (remote) - inlet: | 8 mm |

ISO Certificates

| | |
|----------------|---|
| ISO Standards: | ISO 9001; ISO 14001; ISO 45001; ISO 50001 |
|----------------|---|

Sustainability

| | |
|----------------------|----------|
| Current consumption: | 0.3 Amps |
|----------------------|----------|